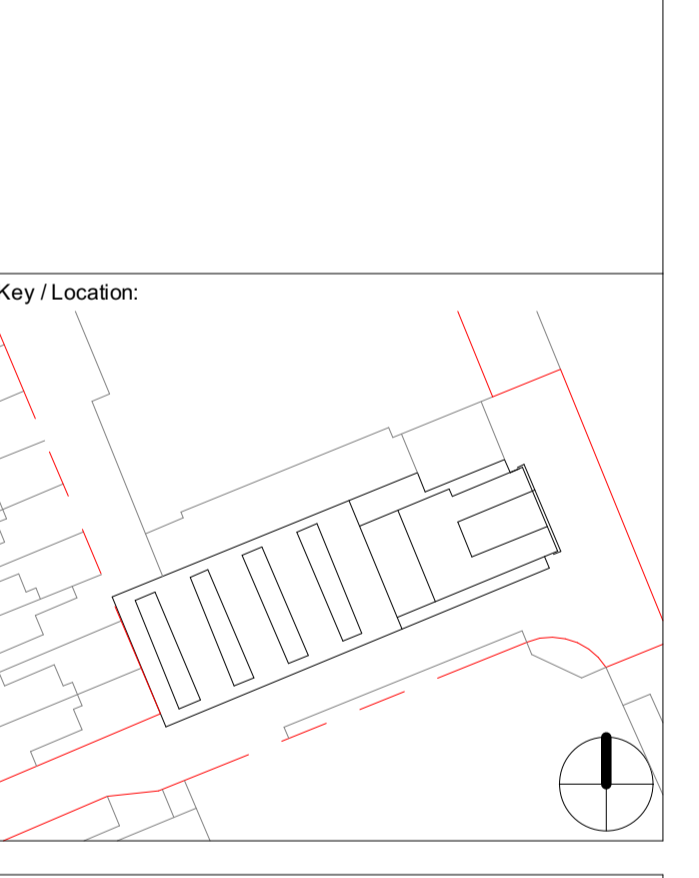
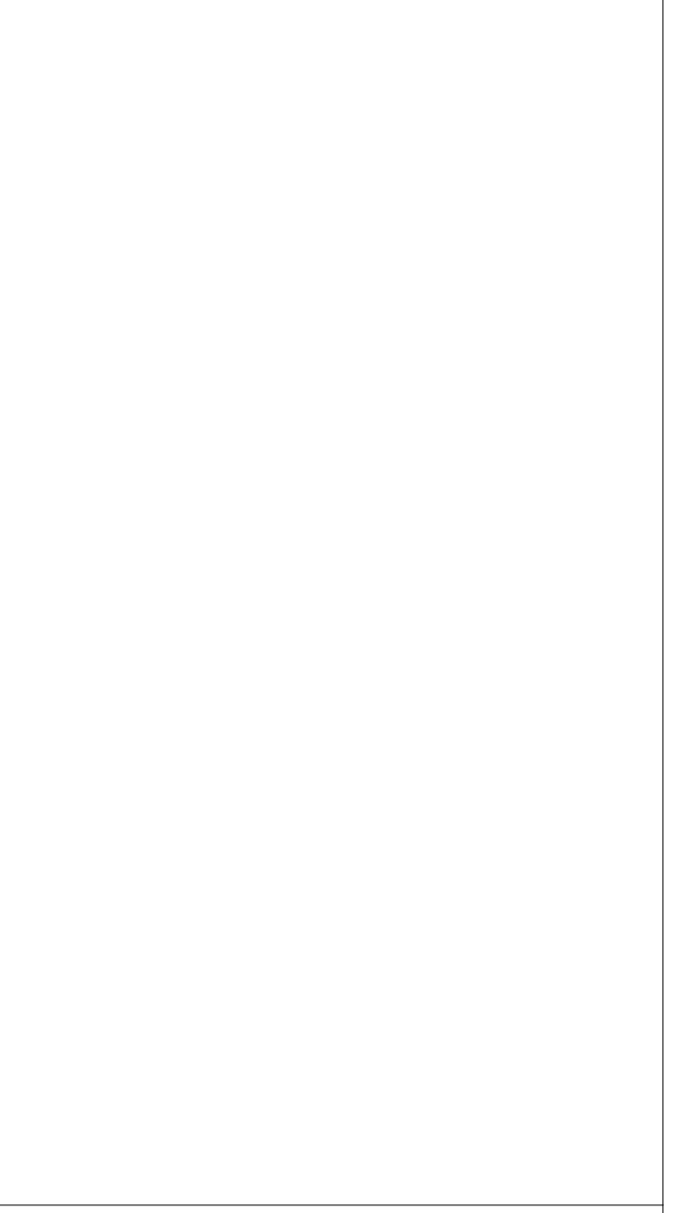


Disclaimer:
Do not scale from this drawing. Check all dimensions on site before fabrication or setting out. This document is copyright and may not be reproduced without permission of the owner.
Ordnance Survey data contained herein is for use on this project only. Third parties involved in this project wishing to reproduce this data for the purposes of said project, may do so on display of the following: © Crown Copyright All rights reserved 2010 License No 0100031673

Notes:
Areas have been calculated in accordance with the RICS/BSVA code of Measuring Practice, (6th edition, 2007) using the stated options N/A, GIA and GEA (ground floor GEA excludes external cycle and refuse stores). Any decisions to be made on the basis of these predictions, conveyances and the like, should make due allowance for fluctuations arising from the following: design development, accurate site survey, site levels and site dimensions, construction method and building tolerances, Local Authority and Statutory consents

Information Exchange 1:	Information Exchange 2:
Information Exchange 3:	Information Exchange 4:

Rev:	Notes:	Date:	Dwn:	Iss:
A	INFORMATION	03.02.2022	MP	BT
B	INFORMATION	04.02.2022	MP	BT



FLANAGAN LAWRENCE
66 Porchester Road, London, W2 6ET
T +44 (0) 20 7748 6166 F +44 (0) 20 7707 6266
www.flanaganlawrence.com
E info@flanaganlawrence.com

Client:
Dorset Hospitality International

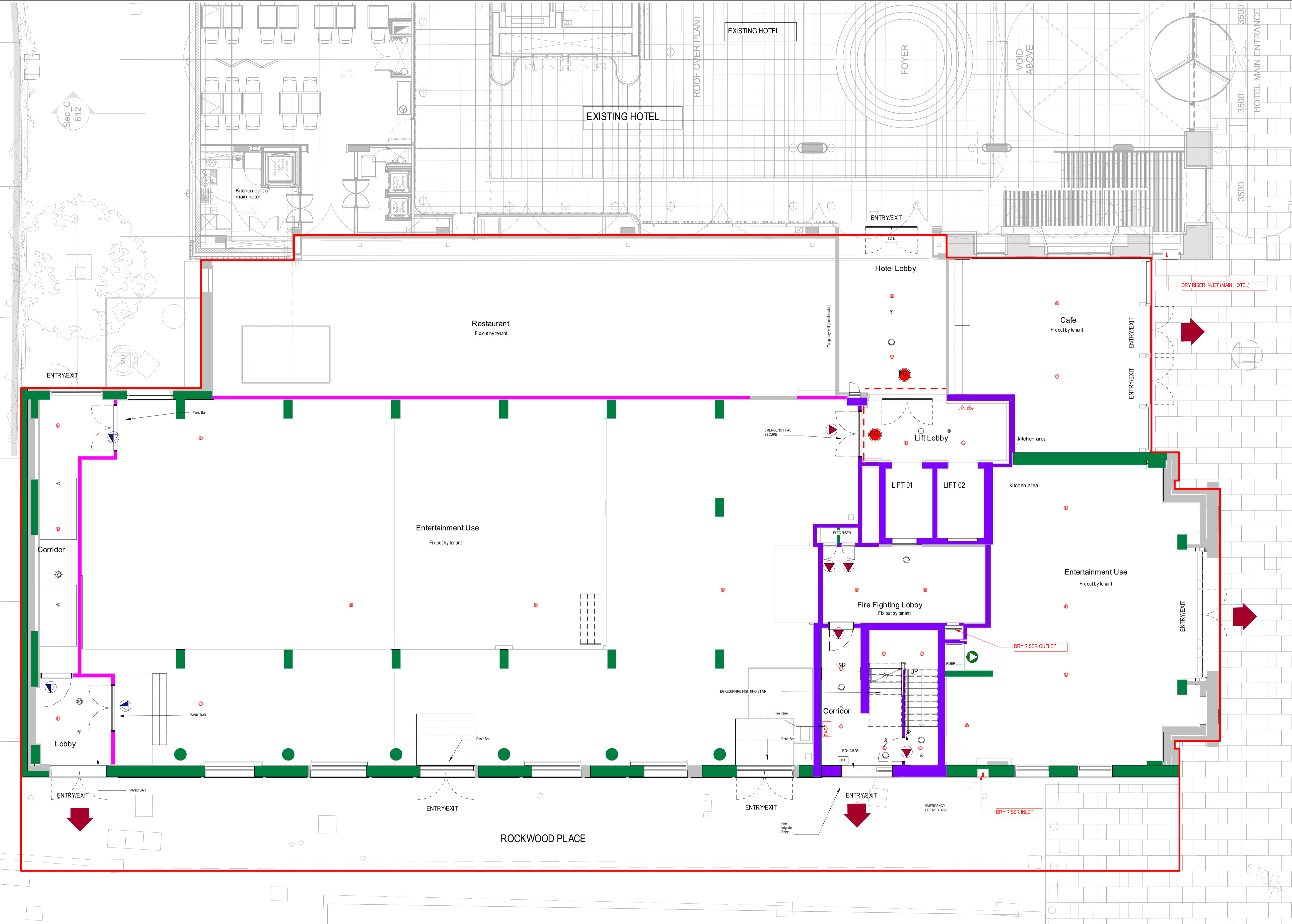
Purpose of Issue:
LICENCING

Project:
56 Shepherds Bush Green

Drawing Title:
GROUND FLOOR PLAN LICENCING

Drawn By: MP	Issued By: BT	Date of First Issue: 03.02.2022
-----------------	------------------	------------------------------------

Project No: 15-040	Scale @ A1: As indicated
Drawing No: 1001-A-FLA-DRG-91-00-0100	Revision: B



1 Ground Floor
1:75

The location and type of any fire safety and any other safety equipment is shown as at present. This may be varied from time to time with the agreement of the Fire Officer or after a fire risk assessment.

Anything shown on this plan which is not required by the Plan Regulations is for illustrative purposes only, and does not form part of the Premises Licence

KEY	
	Minimum 30 mins fire compartmentation - integrity and insulation. All doors, screens etc within this line to maintain compartmentation.
	Minimum 60 mins fire compartmentation - integrity and insulation. All doors, screens etc within this line to maintain compartmentation.
	Minimum 90 mins fire compartmentation - integrity and insulation. All doors, screens etc within this line to maintain compartmentation.
	Minimum 120 mins fire compartmentation - integrity and insulation. All doors, screens etc within this line to maintain compartmentation.
	Minimum 30 min cavity barrier
	Final Emergency Exit
	FD30S 30 min fire resisting door with smoke seal and intumescent strip
	FD60S 60 min fire resisting door with smoke seal and intumescent strip
	FD90S 90 min fire resisting door with smoke seal and intumescent strip
	FD120S 120 min fire resisting door with smoke seal and intumescent strip
	Wheelchair Refuge
	LED Emergency Exit Sign
	Smoke Detector
	Combined Smoke / Smoke Detector
	Fire Alarm Speaker
	Water Mist Sprinkler Head
	Break Glass or other accessory as noted
	Fire Basket
	Fire Extinguisher (Water)
	Fire Extinguisher (Foam)
	Fire Extinguisher (Carbon Dioxide)
	Emergency Lighting
	Cavity barrier in ceiling
	Fabric fire curtain with smoke stopping capabilities to achieve 60 min FD integrity and insulation
	AREA FOR LICENSABLE ACTIVITIES

NOTE: THIS DRAWING WAS PRODUCED IN COLOUR AND SHOULD BE PRINTED AND COPIED IN COLOUR